

PLASCON ALLOYS FOR PULP & PAPER INDUSTRY

Our R&D Department successfully developed the following Alloys of Plascon which enhances the life, reduces the down time, thereby increases the productivity of the paper mills.

PLASCON-V

This is a virgin Ultra High Molecular Weight Polyethyelene having low co-efficient of friction with good abrasion resistance and is white in colour. The wear and tear is slightly higher than other Plascon alloys suitable to use in slow speed machine upto 250 m/min.

PLASCON-P

In comparison to Plascon-V, Plascon-P has reduced co-efficient of friction, because of pigments and sliding additives added to the polymer. Available in Blue, Black, Yellow and Green colour.

PLASCON-GRA

It is Plascon alloyed with Graphite & sliding additives. The filler addition strengthens the Polymer and improves the dimensional stability of the components. It is suitable to be used in end-sealing, packing inside the Suction Roll/Couch roll etc.

PLASCON-M

Where there is lot of Silica contents coming with the stock, this sintered polyethylene reinforced with sliding additives & molybdenum disulphide (MOS2) can provide excellent and uniform drainage with minimum wear & tear because of its very low co-efficient of friction. The fabric life also increases because of uniform and slow Wear & tear and low co-efficient of friction. It is black in colour, suitable for sealing strips and metering bars.

PLASCON-GB

Plascon GB is made by reinforcing the original sintered UHMW PE with homogenous glass beads powder to counter the stock which contains darts, fillers, fines and other foreign materials. By virtue of filler addition, the surface smoothness increased considerably and thus helps to increasing the wire life.

PLASCON-CERA

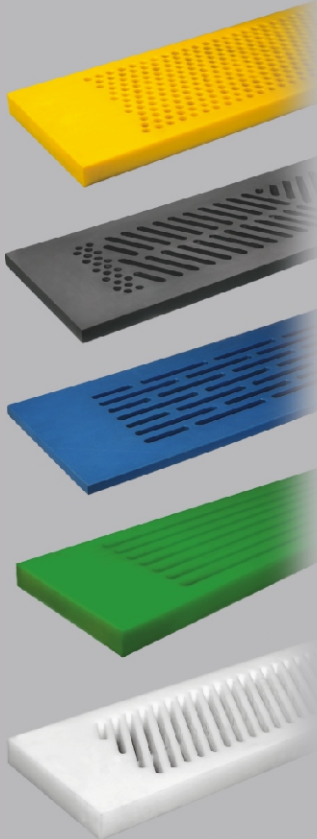
CERA is a unique formulation of Plascon reinforced with microspheres of abrasion resistant silicon compound special dry lubricants. The filler are dispensed homogenously in the polymer matrix and coupled with a coupling agent to improve the abrasion resistance. The superior reinforcing filler provides increased life to dewatering elements. CERA is strongly recommended for high speed machines.

In PLASCON-CERA, we added further two varieties, i.e. Hi-tech CERA & Low-tech CERA and its application is based on the speed of the paper machine.

PLASCON-RIDER

This alloy was the result of our constant R&D work based on customers feedback. It is a double sintered UHMWPE having molecular weight of 9.2 million. The extra high molecular weight Polymer coupled with sliding additives, imported ceramic additives and heat stabilizers impart strength, excellent abrasion resistance, coupled with low co-efficient of friction to the component. As a result, it provides excellent drainage with minimum wear and tear to the fabric alike 100% ceramic materials. Life of components in this case increases substantially by 20 to 30%.

Integrated solutions for Pulp and Paper Industry



PLASCON PROPERTIES

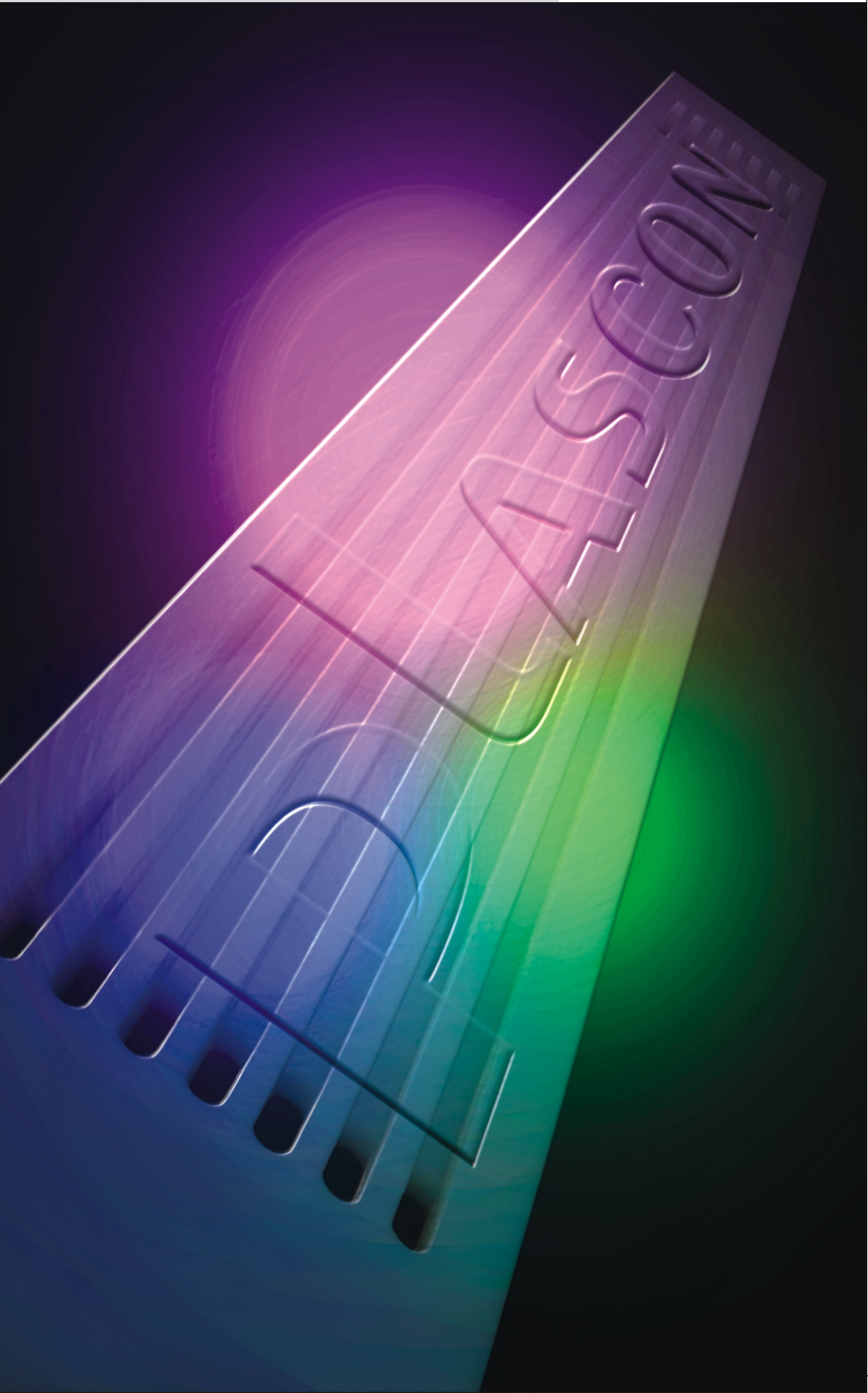
Property	Unit	Testing Method	Plascon V	Plascon M	Plascon GB	Plascon CERA	Plascon Rider
Density	gm/cm³	ISO1183	0.93	0.95	0.96	0.96	0.97
Molecular Weight	g/mol in million	-	5	6.8	9.2	9.2	9.2
Tensile Strength at 23°C	MPa	ISO 527	22	23	24	24	24
Elongation	%	ISO 527	450	450	420	410	400
Notched Impact Strength	KJ/m2	ISO 11542	210	190	130	90	90
Shore Hardness D 5 Sec.	-	ISO 868	66	66	68	70	70
Static co-efficient of friction	-	ASTM D1894	0.1	0.08	0.09	0.09	0.09
Wear by Sand and Slurry method	-	Internal Test Method	100	80	90	92	90

For further details, please contact :

KBK PLASCON PVT. LTD.

Corporate Office :
24/168, Birhana Road, PB. No. 7,
Kanpur-208 001. INDIA
Tel.: 91-512-2310146, 2369353, 2351245
Fax : 91-512-2352058
E-mail : kbk@sancharnet.in
www.plascon.org

Delhi Office :
A-107, DDA Complex, Okhla Indl. Area, Phase II,
New Delhi-110 020. INDIA
Tel.: +91-11-26384242, 4343
Fax : +91-11-55902819
E-mail : polyrib@rediffmail.com
www.plascon.org



KBK PLASCON PVT. LTD. was established in 1985 with the sole purpose of serving Pulp and Paper industry. In India, KBK PLASCON has been a pioneer in the field of POLYMER products under the brand name of "PLASCON" for Pulp &

Paper industry, providing innovative and cost effective solutions from time to time.

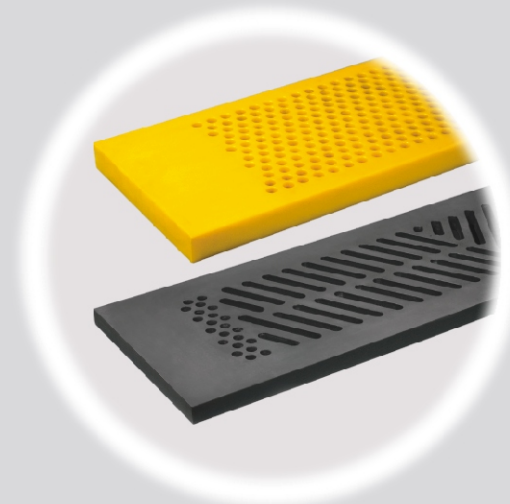
We can manufacture and supply wide range of Dewatering elements, where the length without joints will be 5 metre in Compression Moulding and 10 Metre by welding.

OUR SPECIALITY :

- Total wire drainage solution of Paper machines.
- Centri-cleaning Unit, a total Package - A unique concept of glass filled Unbreakable centricleaner/assembly replacing 100% ceramic.
- Doctor blade of single length upto 10 mtr. without joint.
- UHMW PE Screen Plate (5 mm thick) for Johnson Screen replacing Stainless Steel screen increasing the life.
- Wear Plate for auto valve/washer.
- Plascon Segmented Gears a Unique concept for Dryer Gears.
- KAYLON* based single piece gears for dryer.
- Engineering items like Idlers for Conveyor Systems, various sprockets/rings for Rotary joints/Impellers/Bushes etc. custom made, according to given drawings.
- Plascon Pallets - Heavy duty, unbreakable, washable and resistant to chemicals for paper stacking and transportation.
- Plascon Liner Plates Non sticking to foreign materials.
- Metering Bar

* Further details on request

Plascon Products for Pulp & Paper Industry



Suction Box Top



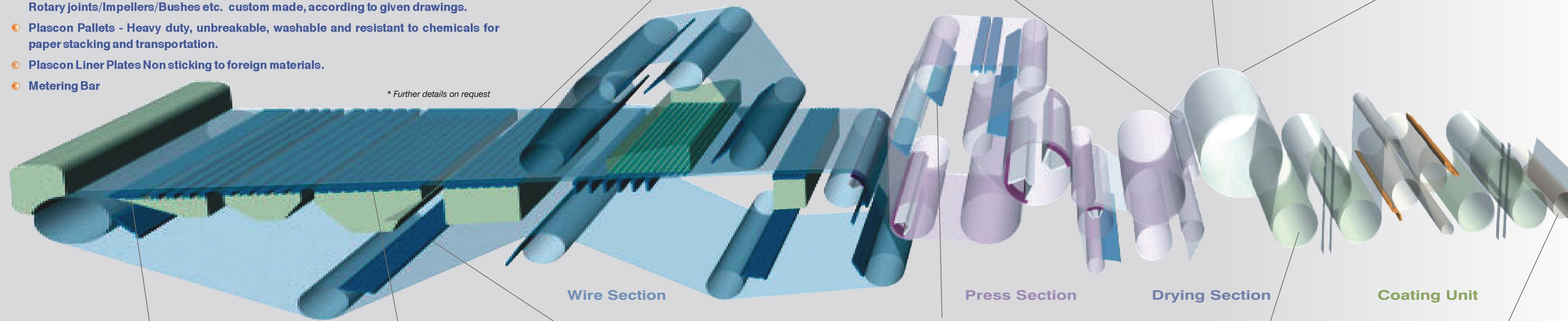
Gear & Pinion



'Plascon' Segmented Spur Gear



'Kaylon' Spur Gear

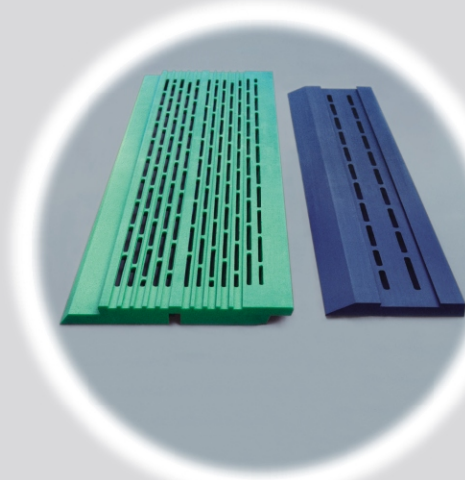


Wire Section

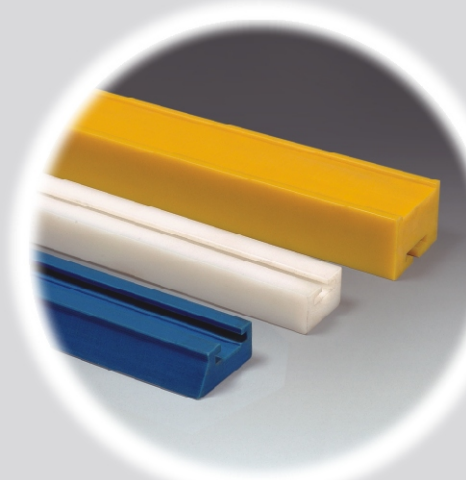
Press Section

Drying Section

Coating Unit



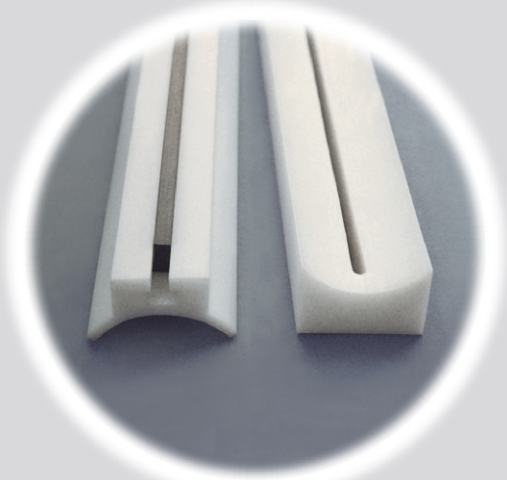
Forming Board



Hydrofoil



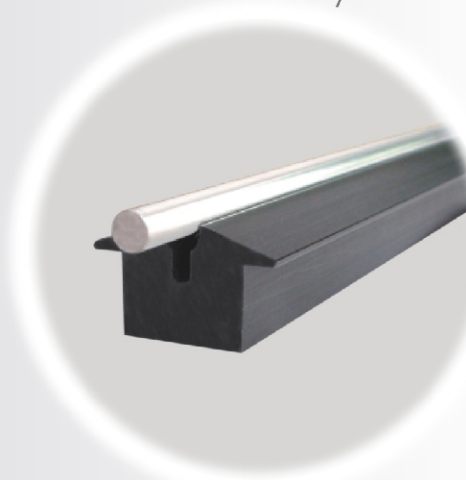
Doctor Blade



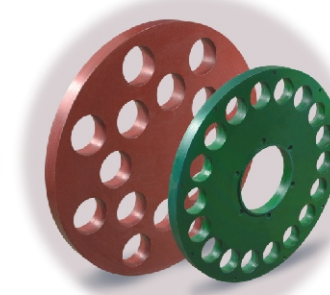
UHLE Box



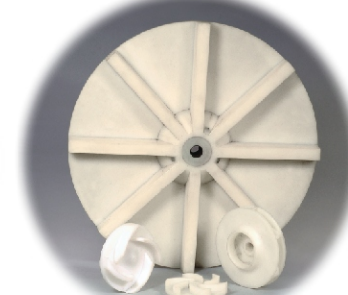
Seals for Rotary Union



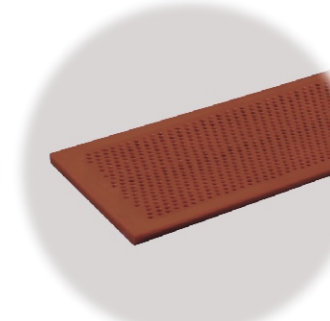
Metering Bar



Wear Plate



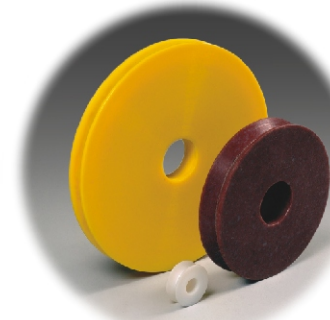
Impeller



Screen



Nozzles



Pulleys



Impact Roller, Bushes & Bearings



Pallet



Trolley Wheel



Moulded Components



PP, PP/FRP Chemical Storage Tank

PULP MILL

CONVEYORS

FINISHING

MISC.